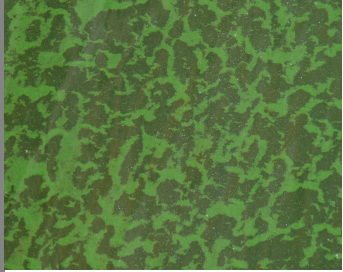




Grenville-sur-la-Rouge

DE CŒUR ET DE NATURE



# Do you think you have seen a blue-green algae bloom?

When the density of cyanobacteria (blue-green algae) in the water is so high that it is visible to the naked eye, this is known as a blue-green algae bloom.

## How do you recognize blue-green algae bloom?

Algae blooms are generally green or turquoise in colour, although they may sometimes have a reddish, yellow, brown or white tint. They often look like:

- \* a thick "soup" of particles resembling peas, broccoli buds or fine grass clippings;
- \* a paint spill on the surface of the water, or surface scum that has accumulated in a partially enclosed area;
- \* a deposit of scum on the shore. Such deposits may be viscous.

Some algae blooms cover the entire surface of the water, while others may be restricted to a specific area, such as a bay of a lake or a stretch of river.

## What should you do if you see a blue-green algae bloom?

Anyone who suspects the presence of blue-green algae bloom is invited to report the situation immediately to the appropriate Ministry (MDDELCC) regional office in one of the following ways:

- \* At any time: complete the "Constat Visuel" form (French) ([http://www.mddelcc.gouv.qc.ca/eau/eco\\_aqua/cyanobacteries/formulaire/formulaire.asp](http://www.mddelcc.gouv.qc.ca/eau/eco_aqua/cyanobacteries/formulaire/formulaire.asp)) and transmit it to the MDDELCC, either directly online, by fax (450-433-1315) or by E-mail: [laurentides@mddelcc.gouv.qc.ca](mailto:laurentides@mddelcc.gouv.qc.ca).
- \* During office hours: call the MDDELCC regional office (450-433-2220) and ask to speak to the person in charge of blue-green algae bloom (cyanobacteria).
- \* Outside of office hours: contact Urgence-Environnement at 1 866-694-5454.

You can also consult the following MSSS (ministry of health) information page for the precautions to take when in the presence of blue-green algae:

<http://www.santé.gouv.qc.ca/en/conseils-et-prevention/algues-bleu-vert/>

The municipality of Grenville-sur-la-Rouge invites you to consult the following documents and videos from the Ministry (MDDELCC).

- 1) Blue-green algae bloom identification guide (French):  
[http://www.mddelcc.gouv.qc.ca/eau/eco\\_aqua/cyanobacteries/guide-identif.pdf](http://www.mddelcc.gouv.qc.ca/eau/eco_aqua/cyanobacteries/guide-identif.pdf)
- 2) Categories of blue-green algae bloom (French):  
<http://www.mddelcc.gouv.qc.ca/eau/algues-bv/categorie-fleur-deau.pdf>
- 3) Blue-green algae bloom: identification, reporting and prevention:  
<http://www.mddelcc.gouv.qc.ca/eau/algues-bv/video/video.asp>

Source: All information presented in this document was obtained from the website of the Ministère du Développement durable, de l'Environnement et la Lutte contre les Changements climatiques:  
<http://www.mddelcc.gouv.qc.ca>

Oriana Farina, MSc. Environment Inspector.

Municipality of Grenville-sur-la-Rouge. 88 rue des Érables, Grenville-sur-la-Rouge, Québec J0V 1B0. Tel: 819 242-8762 Ext. 3136.

Website: [www.gslr.ca](http://www.gslr.ca)